



THINKING SPACE

technical furniture and control room solutions

EVOLUTION

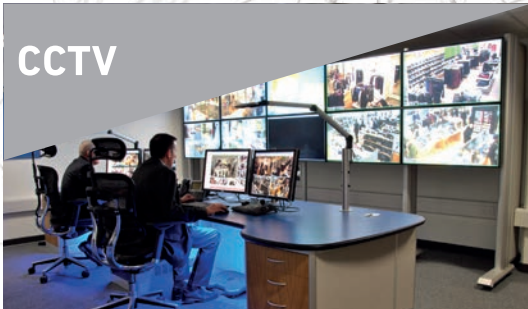
media wall technology



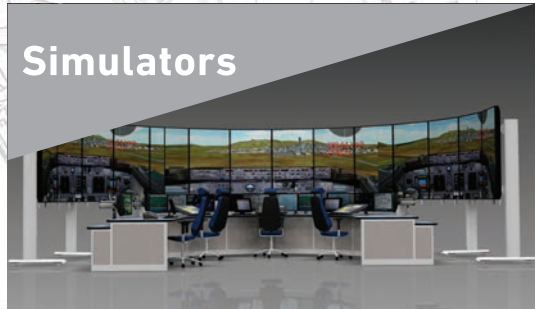
Broadcast



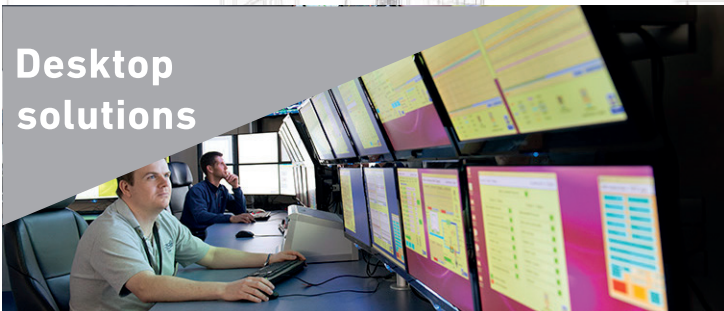
CCTV



Simulators



Desktop solutions



Built-in storage



improving working environments

www.evolutionmediawalls.com

Introduction

The Evolution range is the latest in Media Wall Technology from Thinking Space Systems, offering complete flexibility in mounting flat screen monitors. Built completely from aluminium extrusions, the Evolution system is an aesthetic solution for domestic, commercial and professional environments.

Supplied in natural aluminium, black or any RAL colour of your choice, the Evolution wall can be personalised to the clients requirements.



Why choose the Evolution system?

- Flexible design with unlimited wall configurations
- Lightweight and aesthetic aluminium frame
- Adaptable framework for easy modification
- Includes cable management and power distribution
- 10 year guarantee
- Standard configurations available for an "off-the-shelf" solution
- Powdercoating to any RAL colour of your choice
- Bespoke solutions to meet your exact requirements
- Privacy panel option which can be printed with colour, logos or artwork for a corporate look
- Suitable for any sized monitor, and can be used with other manufacturers monitor mounts



Environments

- Receptions
- Control rooms
- Broadcast studios
- Exhibition stands
- Monitoring stations
- Conference rooms
- Bespoke desk solutions
- ATC training simulators and remote digital towers

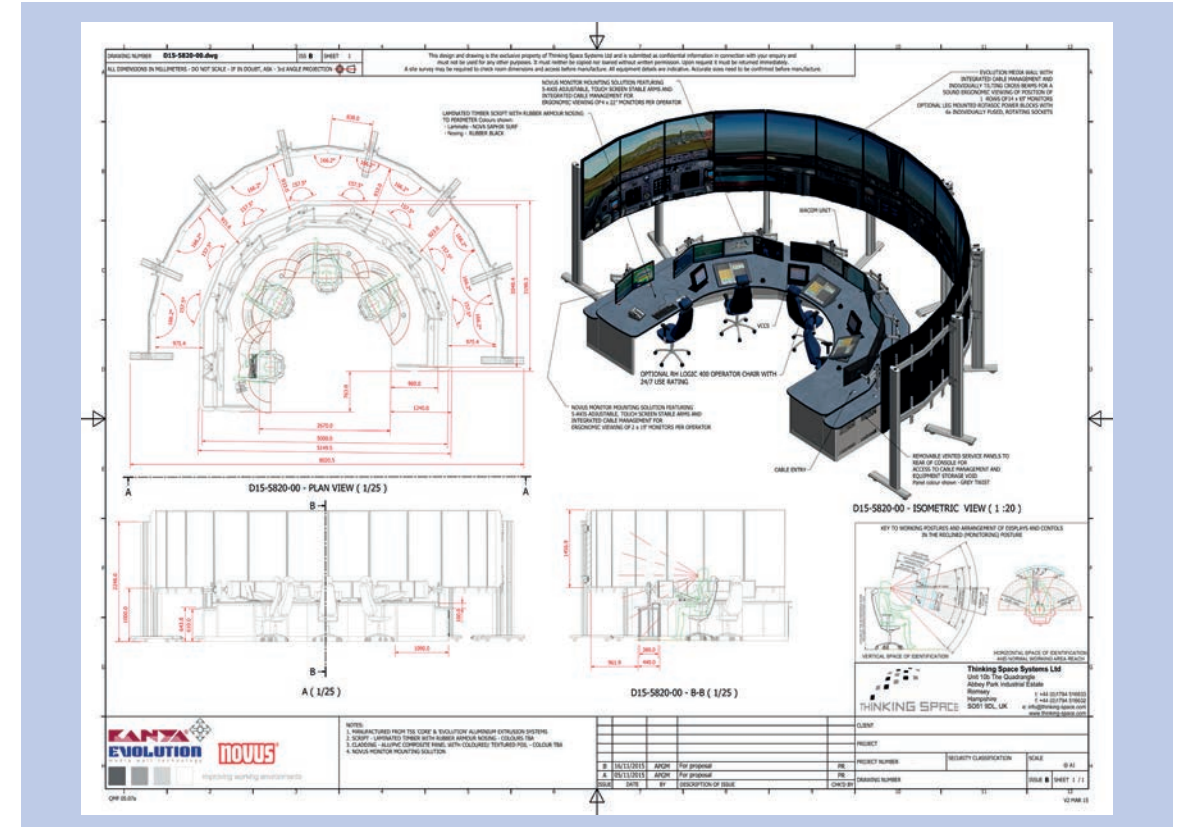


Design service

- Free design service including site visit and quotation for all custom requirements
- 3D CAD renders provided to visualise your media wall
- Staff experienced in control room design and ergonomics can provide recommendations and advice on layout and ergonomic design
- For custom designs, site surveys can be provided upon request



EVOLUTION media wall technology



Videos

See our information and assembly video guides on our YouTube channel



thinkingspacesystems



Standard media walls

Our range of standard configurations are available as an "off-the-shelf" solution. Media walls are quickly despatched to you for easy self assembly following our guide or tutorial video. The standard range also allows for future expansion as required.

The larger mounts are typically used for flat screen monitors from 37 to 55 inches, for sizes outside of this range we can advise once the model details are known.



4 x 2



1 x 2



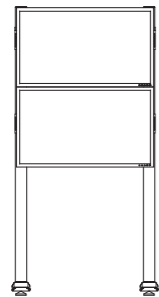
2 x 1



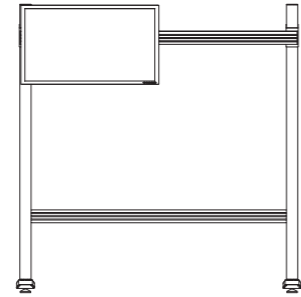
2 x 2



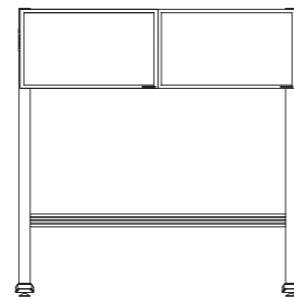
3 x 2



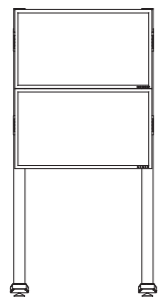
Evolution Media Wall 1x2
Monitor Configuration (1 : 20)



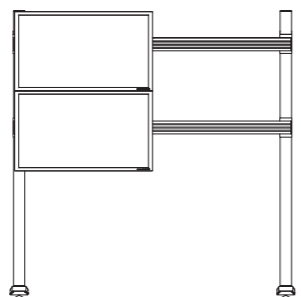
Modification of Configuration: Top Beam Extended
Lower Brace Beam Added (1 : 20)



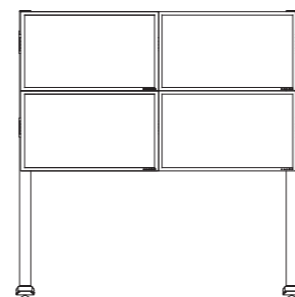
New Evolution Media Wall 2 x 1
Monitor Configuration (1 : 20)



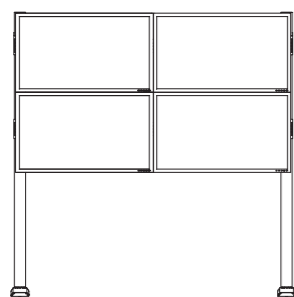
Evolution Media Wall 1x2
Monitor Configuration (1 : 20)



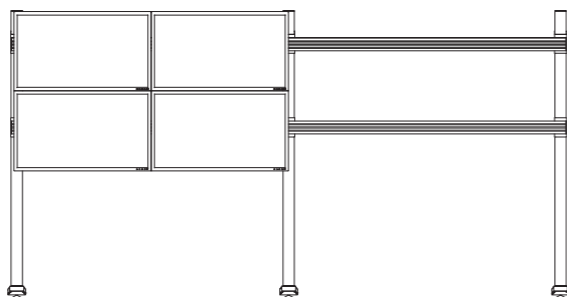
Modification of Configuration:
Top & Bottom Beams Extended (1 : 20)



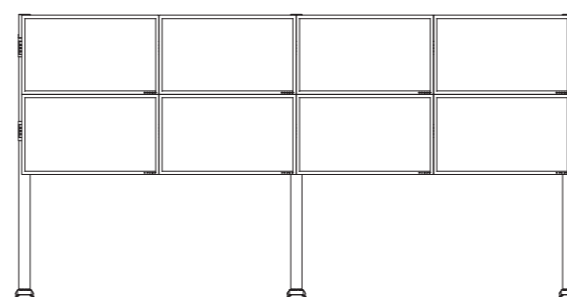
New Evolution Media Wall 2x2
Monitor Configuration (1 : 20)



Evolution Media Wall 2x2
Monitor Configuration (1 : 20)

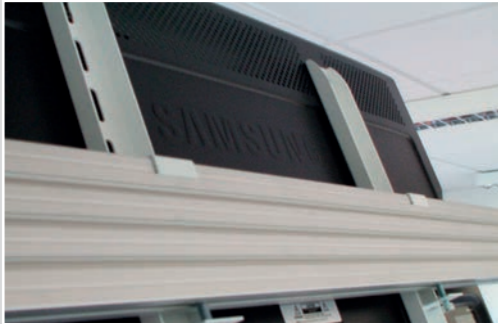


Modification of Configuration:
Top & Bottom Beams Extended, Middle Leg with Brackets Added (1 : 20)

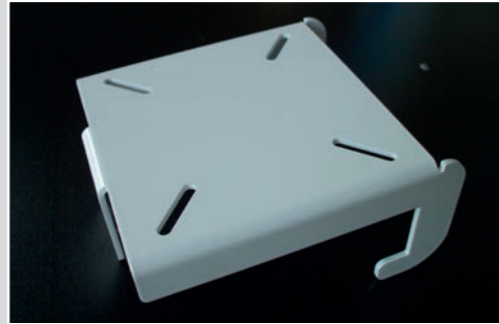


New Evolution Media Wall 4x2
Monitor Configuration (1 : 20)

Typical features



Easy lift off brackets are supplied for mounting larger flat screens from 37" to 55". For sizes outside that range, then please get in touch with us



Fixed lift off plates are the most cost effective solution for mounting smaller screens, perfect for monitors with 75/100 VESA fixings that will be located at a low level



Hollow feet allow cable access through the access floor below. Levelling feet are fitted as standard to provide adjustability



Bolt through the floor detail an option for further stability



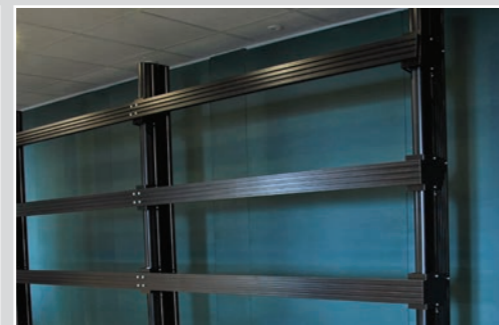
Tiltable railing system guarantees all screens are angled the same, up to 30 degrees



Integrated cable management tray supplied as standard



Partitioned cable management for power and data separation runs from cable tray through brush strip down the media wall leg where power distribution units can be fitted



Finish with powdercoating to any RAL colour of your choosing

improving working environments



Custom media walls

We offer custom designs built to your exact requirements. Our experienced team will work with you to create a solution. All we need from you are:

- Your room dimensions
- Sight lines and recommended viewing angles
- Number, size and configuration of flat screen monitors
- Your working environment and workflow details
- Any existing or new furniture requirements



Simulators and Digital Towers

The Evolution media wall system is a perfect choice for simulators and remote digital tower applications in air traffic environments. The angling adjustment behind the screens allows for the configuration of curved effect solutions. Monitors can be mounted in landscape or portrait mode, with privacy panels below which can be printed with colour or logos to enhance corporate branding



Example of a Air Traffic Digital Tower set up



Accessories



Speaker mounts, which can be powdercoated to match the media wall finish



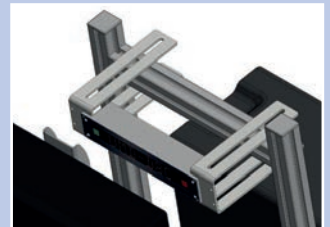
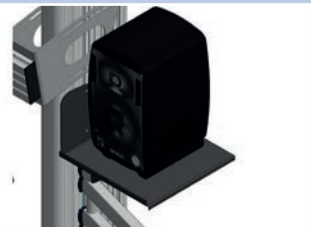
Novus folding arm monitor mounts can be fixed to the media wall for additional mounting options



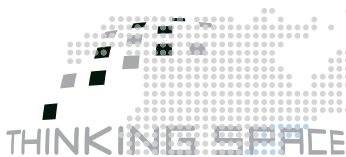
PC tower mounts can be fitted to the rear of the media wall, allowing siting of monitor and PC together



Digital clock mounting



Find out more at www.evolutionmediawalls.com



Worldwide Offices:



Thinking Space Systems Australia
Thinking Space Systems Pty Ltd
Unit 1/55 Holbeche Road
Arndell Park, NSW 2148
Australia
w: www.thinking-space.com.au
t: 1300 798 106
e: lee.evans@thinking-space.com.au



Thinking Space Systems Canada
Thinking Space Systems Ltd
170-3705 Place de Java
Brossard, Quebec J4Y 0E4
Canada
w: www.thinking-space.ca
t: +1 (450) 444-3008 ext.222
e: jamesgroundwater@thinking-space.com



Thinking Space Systems USA
Thinking Space Systems Inc
17978 Dumfries Circle
Olney, MD 20832
USA
www.thinking-space.us
t: +1 (301) 968-5202
e: kjohnson@thinking-space.us



Thinking Space Systems Ltd
Unit 10b The Quadrangle
Abbey Park Industrial Estate
Romsey
Hampshire SO51 9DL
United Kingdom
t: +44 (0) 1794 516633
f: +44 (0) 1794 516632
w: www.thinking-space.com
e: info@thinking-space.com